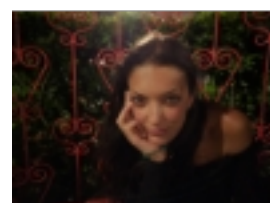


Warning: [2024-05-20 01:39] this document is a print-out of the Ciência-iul web portal and was automatically generated at the labeled date. The document has a mere informational purpose and represents the information contained on Ciência-IUL at that date.

Angela Rijo

PhD Scholar

CIS-Iscte - Centre for Psychological Research and Social Intervention (ECSH)
[PsyChange: Psychology of societal change]



Contacts

E-mail	Angela_Espinheira@iscte-iul.pt
Office	2N06

Academic Qualifications

University/Institution	Type	Degree	Period
ISCTE-Instituto Universitário de Lisboa	PhD	Psychology PhD program	2027
ISCTE-Instituto Universitário de Lisboa	M.Sc.	Social and Organizational Psychology	2021
ISCTE-Instituto Universitário de Lisboa	Licenciate	Psychology	2019

Total Citations

Web of Science®	9
Scopus	11

Publications

• Scientific Journals

- Scientific journal paper

1	<p>Rijo, A. & Waldzus, S. (2023). That's interesting! The role of epistemic emotions and perceived credibility in the relation between prior beliefs and susceptibility to fake-news. <i>Computers in Human Behavior</i>. 141</p> <p>- Times Cited Web of Science®: 9</p> <p>- Times Cited Scopus: 11</p> <p>- Times Cited Google Scholar: 15</p>
---	---

• Conferences/Workshops and Talks

- Talk

1	<p>Waldzus, S. & Rijo, A. (2023). How surprising! Epistemic emotions and perceived credibility mediate the relation between prior beliefs and responses to fake and true news. General Meeting of the European Association of Social Psychology (EASP).</p>
2	<p>Waldzus, S. & Rijo, A. (2023). Wow , I Didn't Know That! the Role of Epistemic Emotions and Perceived Credibility in the Relation between Political Beliefs and Responses to Fake and True News. 2023 Annual Convention of the Association for Psychological Science (APS).</p>

• Other Publications

- Master's Dissertation

1	<p>Rijo, A. (2021). Towards a General Model of (Mis-)Information Belief and Sharing.</p>
---	--